



How to Configure Remote Log Server and Log in AccelStor All-Flash Array

Version History

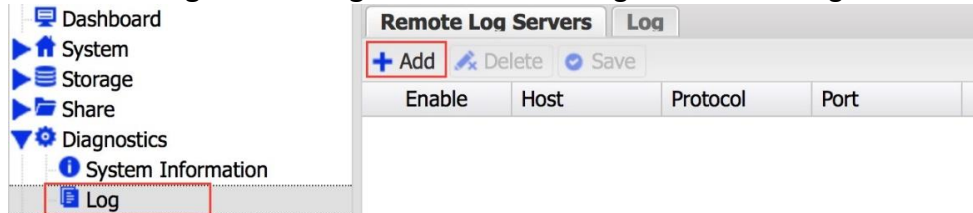
Version	Changed	Date
V1.0	First release	20170607

Remote Log Server

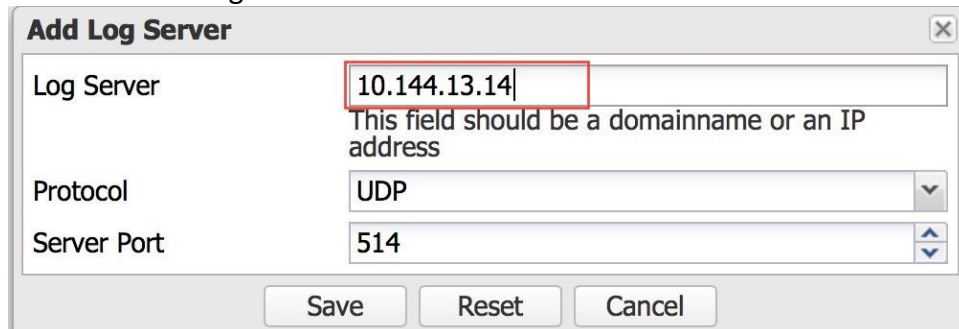
The remote log server (or syslog server) provides an alternative location to store all log files from different devices. It also provides a centralized management interface to monitor system status.

NeoSapphire GUI

1. Select **Diagnostics->Log**. Click **Add** to configure a remote log server.

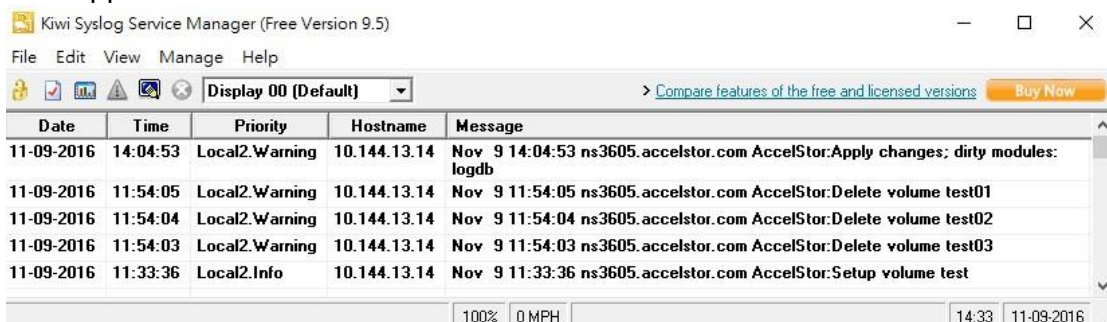


2. Enter the IP address of the remote log server. For the remaining fields, use the default settings.



Log Server Software

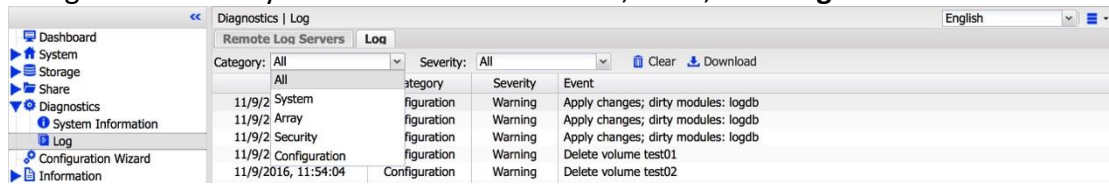
1. You need to install log server software in a server to make it a remote log server and to receive event notifications from the NeoSapphire AFA.
2. The remote log server can display all records that have been sent by the NeoSapphire.



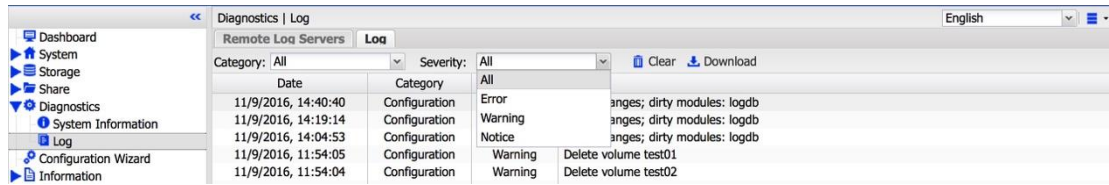
Event Log

The event log is used to record all system changes and errors. It provides important information for the system status as well as troubleshooting.

There are 5 categories: **All**, **System**, **Array**, **Security** and **Configuration**. There are also 4 degrees of severity for event notifications: **All**, **Error**, **Warning** and **Notice**.

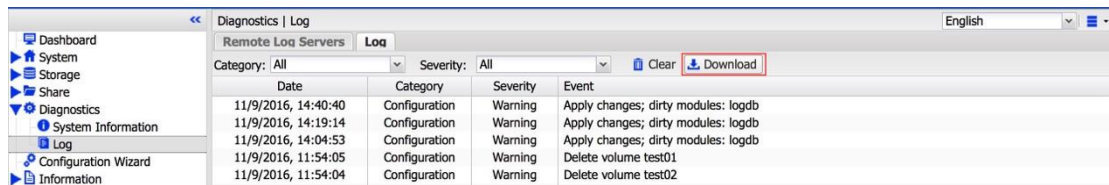


Date	Category	Severity	Event
11/9/2016, 11:54:04	Configuration	Warning	Delete volume test02
11/9/2016, 11:54:05	Configuration	Warning	Delete volume test01
11/9/2016, 14:04:53	Configuration	Notice	Apply changes; dirty modules: logdb
11/9/2016, 14:19:14	Configuration	Warning	Apply changes; dirty modules: logdb
11/9/2016, 14:40:40	Configuration	Error	Apply changes; dirty modules: logdb



Date	Category	Severity	Event
11/9/2016, 11:54:04	Configuration	Warning	Delete volume test02
11/9/2016, 11:54:05	Configuration	Warning	Delete volume test01
11/9/2016, 14:04:53	Configuration	Notice	Apply changes; dirty modules: logdb
11/9/2016, 14:19:14	Configuration	Warning	Apply changes; dirty modules: logdb
11/9/2016, 14:40:40	Configuration	Error	Apply changes; dirty modules: logdb

The log file can be downloaded as well. If necessary, send this file to your support contact for further assistance.



Date	Category	Severity	Event
11/9/2016, 11:54:04	Configuration	Warning	Delete volume test02
11/9/2016, 11:54:05	Configuration	Warning	Delete volume test01
11/9/2016, 14:04:53	Configuration	Warning	Apply changes; dirty modules: logdb
11/9/2016, 14:19:14	Configuration	Warning	Apply changes; dirty modules: logdb
11/9/2016, 14:40:40	Configuration	Warning	Apply changes; dirty modules: logdb